



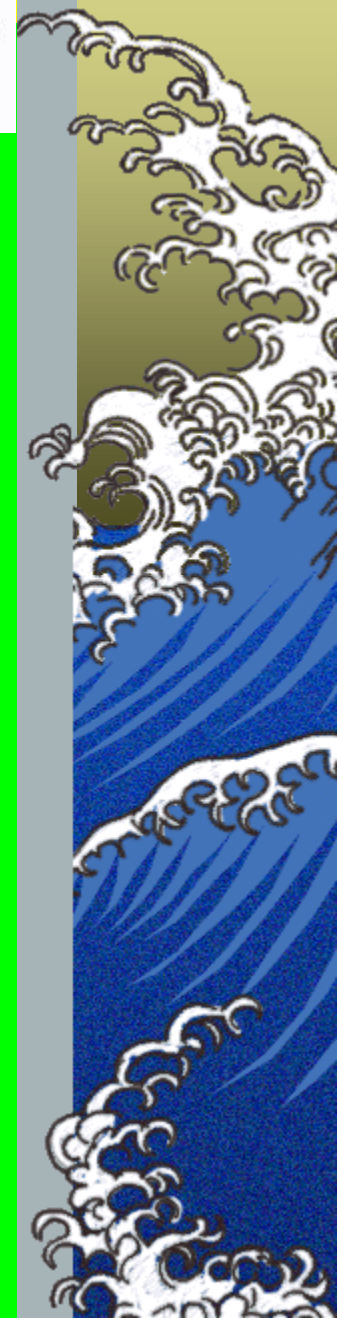
## **SOLITONS INDUCTION BY TUINA**



### **\* TUINA \* PRACTICE \***

**BARBARA BELLOMO, DVM**  
**Scuderia dei Vet - Milan – Italy**

**FRANCESCO LONGO, DVM, Repr. Spec.**  
**ItVAC – ItVAS – Bologna – Italy**





# SOLITONS INDUCTION BY TUINA



## HEAD



**NEI CHUN YIN**

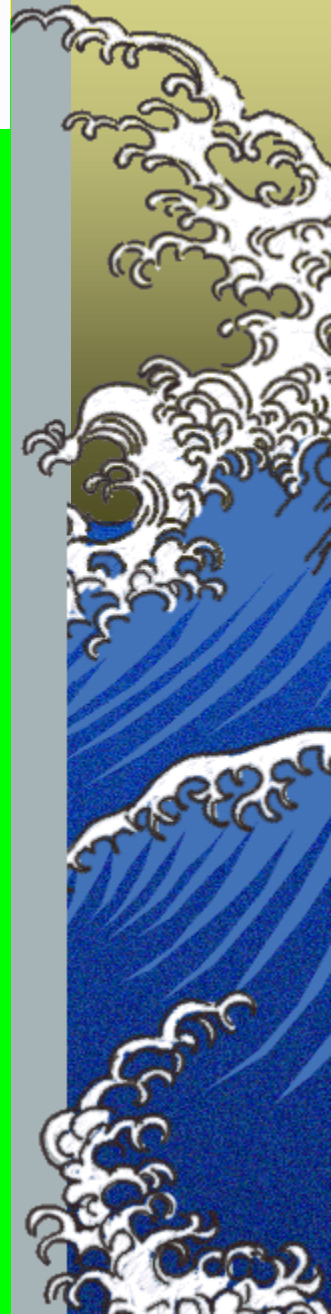


**IT IS STIMULATED  
BY NIE – FA / TUINA  
TECHNIQUE**

**IT CALMS THE  
HORSE**

**BEHAVIOURAL  
PROBLEMS**

**IT RELAXES SHEN**





# SOLITONS INDUCTION BY TUINA



## HEAD



**TAI YANG  
(*NAOSHU*)**

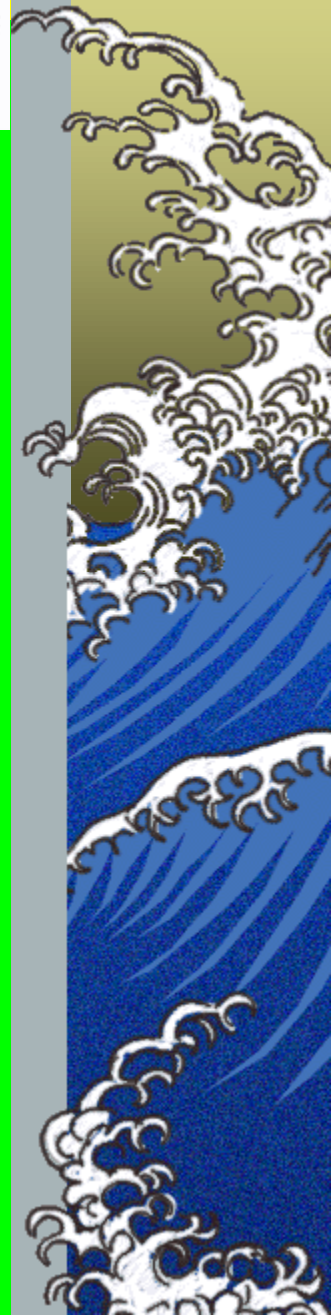


**Meeting Point of ST  
– TH – GB PM**

**It improves the Wei  
Qi**

**It acts on tissues of  
ectodermal origin**

**It regulates the  
Thalamus**







# SOLITONS INDUCTION BY TUINA



## HEAD



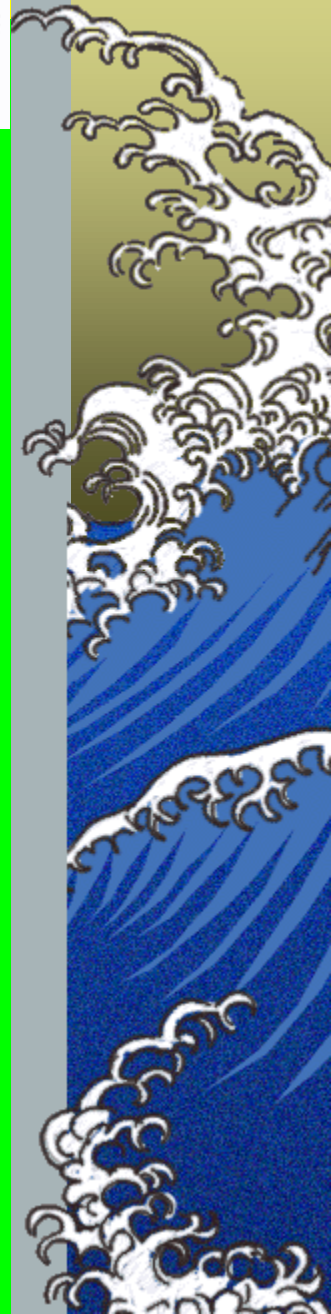
**ST 3 (*JULIAO*)**



**Meeting Point of  
ST – BL - GB TMM**

**Point of Yang  
Qiao Mai**

**It treats trismus  
of nape and  
shoulder**



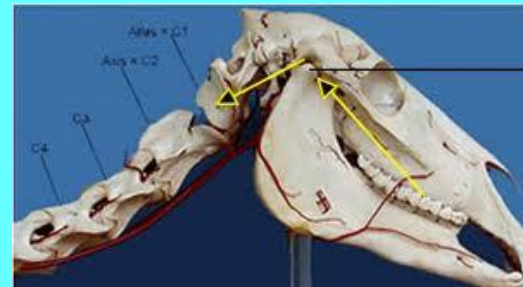


# **SOLITONS INDUCTION BY TUINA**

## **TEMPOROMANDIBULAR JOINT**

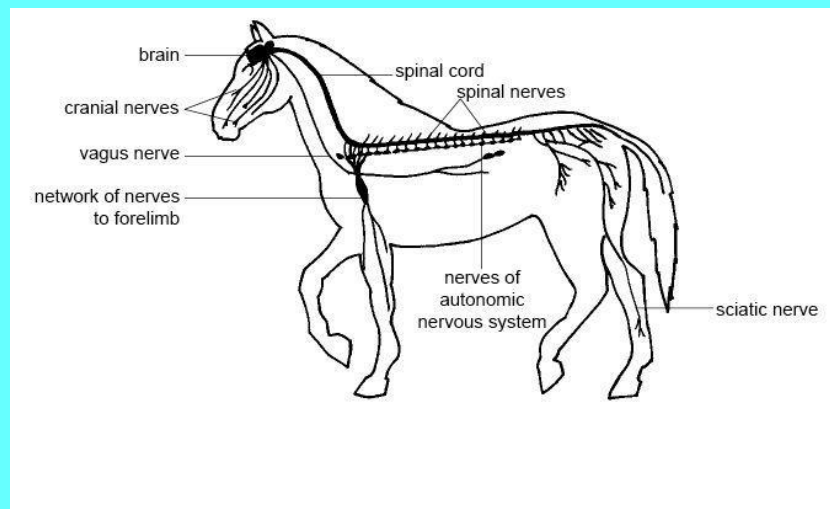


**JOINT UNBLOCK**



**CORRECT MOVEMENTS**  
**HEAD**

**SPINE CERVICAL TRACT**

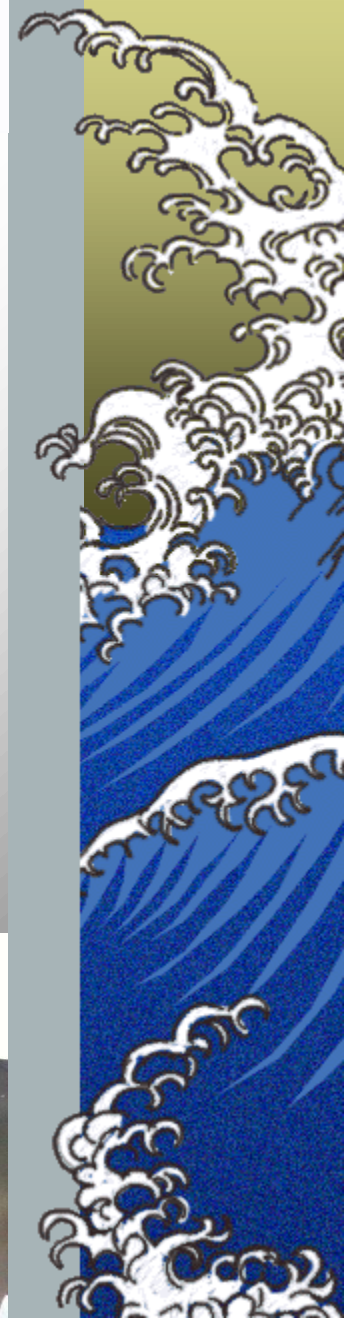
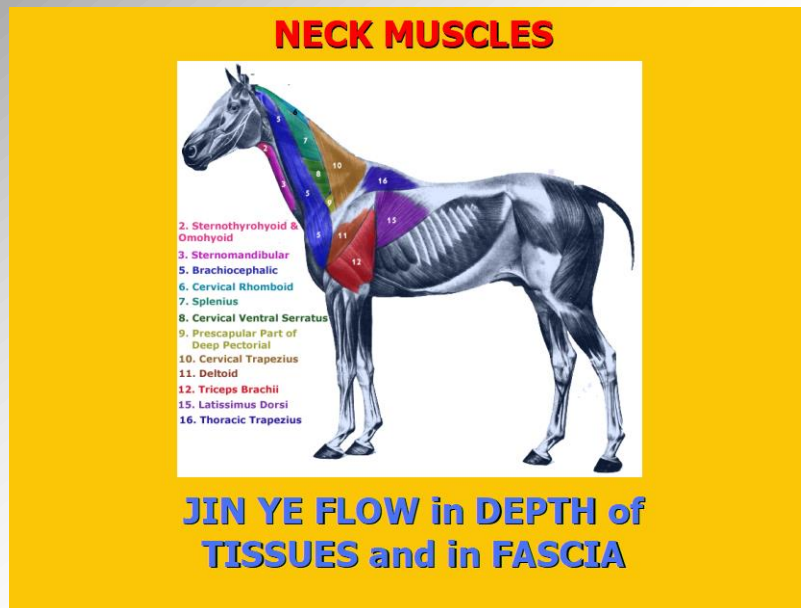




# SOLITONS INDUCTION BY TUINA



## NECK







# SOLITONS INDUCTION BY TUINA



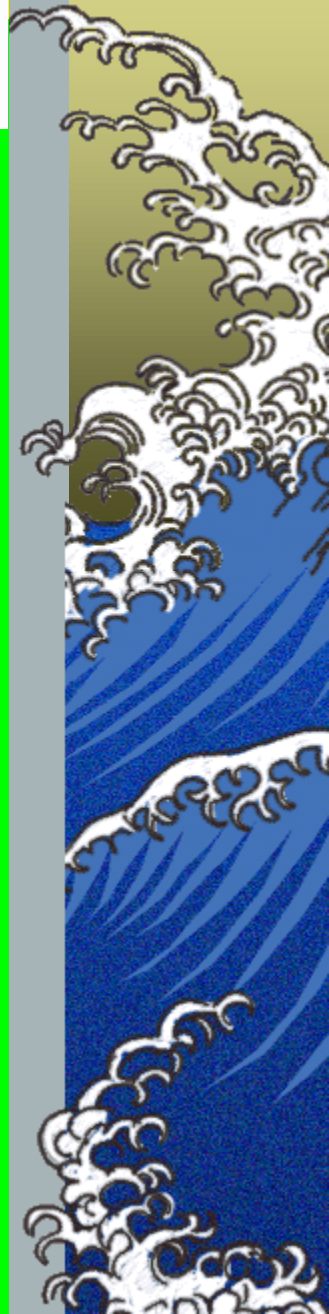
## NECK



Meeting Point of  
LU – LI DM

**CV 22**  
**(*TIANTU*)**

Point of Yin Wei  
Mai





# SOLITONS INDUCTION BY TUINA



## NECK



**CV 23**

**(*LIANQUAN*)**



**Meeting Point of  
KI – PC DM**

**Point of Yin Wei  
Mai**







# SOLITONS INDUCTION BY TUINA



## NECK

**BL**  
**GB**  
**LI**  
**ST**  
**TH**  
**Channels**

**MO CA FA**





# SOLITONS INDUCTION BY TUINA

## SOLAR PLEXUS



**SOLAR PLEXUS - CV 15 (*Jiuwei*)**



**LUO POINT for RENMAI**

**YUAN POINT for GAO**

**SUPPORTS THE FIRE EXPANSION**

**RELAX TORAX**

**SUPPORTS DIAPHRAGM**

**CALM THE SHEN**

**IT REGULATES THE EMOTIONAL FUNCTION OF  
THE HT IN RELATION TO OUTSIDE**

