



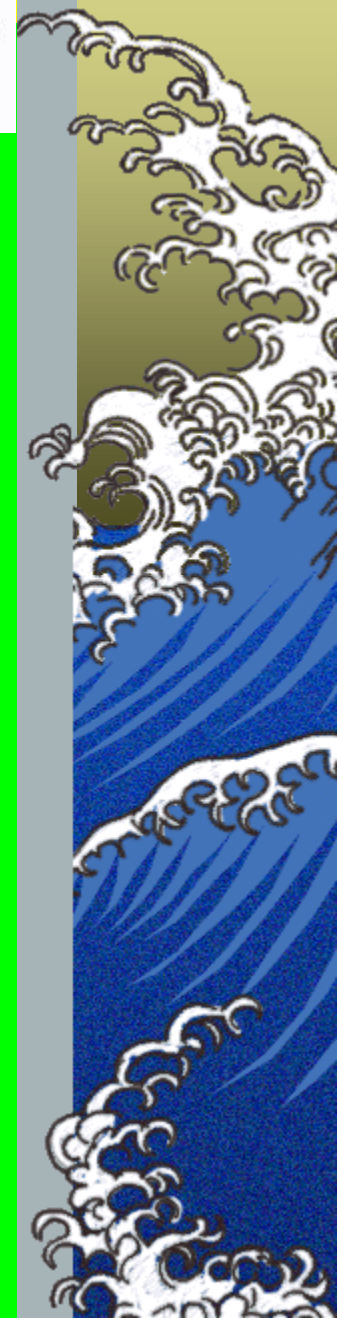
## **SOLITONS INDUCTION BY TUINA**



### **\* TUINA \* PRACTICE \***

**BARBARA BELLOMO, DVM**  
**Scuderia dei Vet - Milan – Italy**

**FRANCESCO LONGO, DVM, Repr. Spec.**  
**ItVAC – ItVAS – Bologna – Italy**

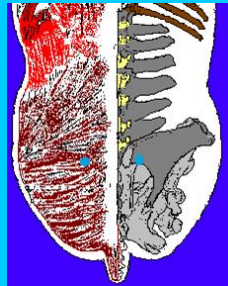




# SOLITONS INDUCTION BY TUINA



## HINDLIMBS



**SHEN SHU**

**Improve KI  
Energy**

**JI YA FA**





## SOLITONS INDUCTION BY TUINA



# HINDLIMBS

**BL 35**  
***Huiyang***



**Hui Point of Yang**

**It has action on  
lumbar area**

**Diagnostic Point of  
the Hock**

**It induces a correct  
position of Sacrum**

**It improves Wei Qi**





## **HINDLIMBS**

### **GB 34 (*YANGLINGQUAN*)**



**Hui Point of Muscles  
and Tendons**

**Meeting Point of the  
BL TMM**

**It improves the Wei  
Qi**







# SOLITONS INDUCTION BY TUINA



## HINDLIMBS

**BL**  
**GB**  
**ST**

**Channels**



**ZHEN DONG FA**





# SOLITONS INDUCTION BY TUINA



## HINDLIMBS



**ST 41**  
**(JIEXI)**



**It corresponds  
to Tai Shan  
(SP – ST)**





## SOLITONS INDUCTION BY TUINA



# HINDLIMBS



**BL 60**  
**(*KUNLUN*)**

**It corresponds  
to Kunlun Shan  
(Spine)**





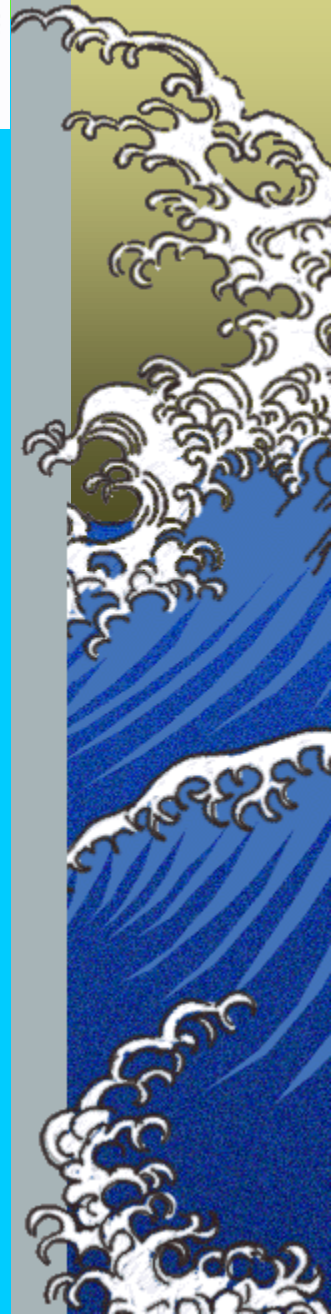
## **HINDLIMBS**



**It corresponds to  
Hua Shan  
(Spine – Marrow  
– Brain – Inner  
Beauty)**

**Achilles Tendon**

**It stimulates KI –  
BL –  
Reproductive  
Glands**







# SOLITONS INDUCTION BY TUINA



## HINDLIMBS



**Ting Points**

**Foot Points**



***Hou Ti Men***



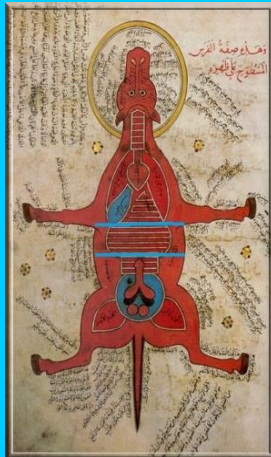


# SOLITONS INDUCTION BY TUINA

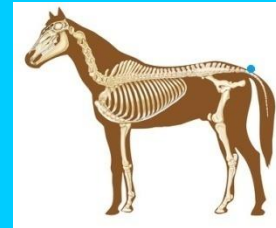


## TAIL

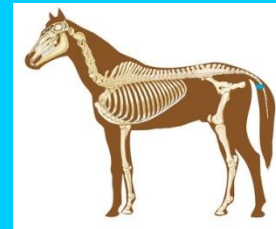
### Tail Points



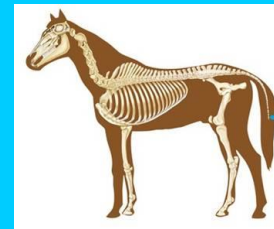
### Wei Gen



### Wei Ben



### Wei Jian





# SOLITONS INDUCTION BY TUINA



## \* HORSE \* POINT \*



**LR 3**

***Taichong***



**The most  
important  
point to  
regularize the  
energetic  
functions**

